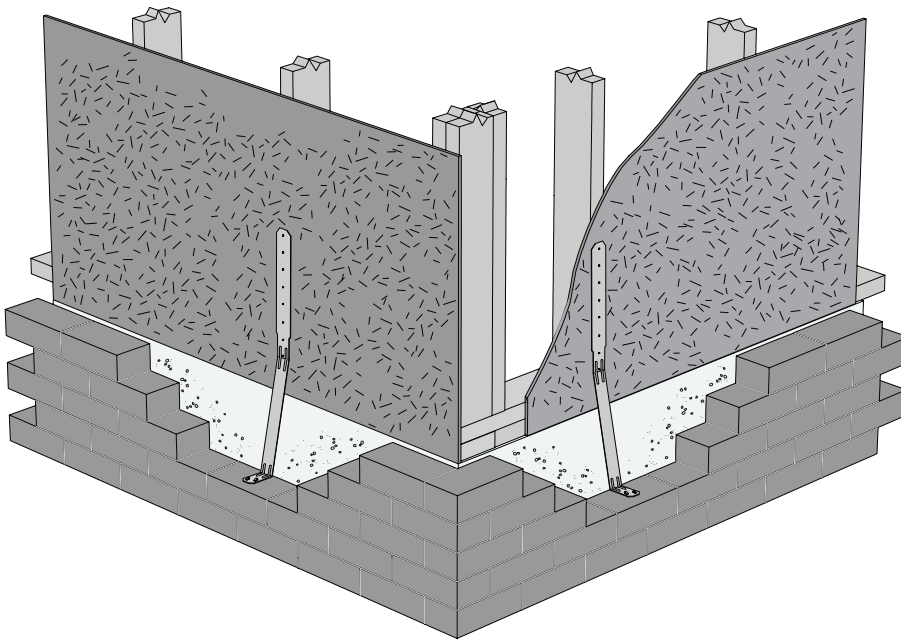


ETFSS: Engineered Timber Frame Strap

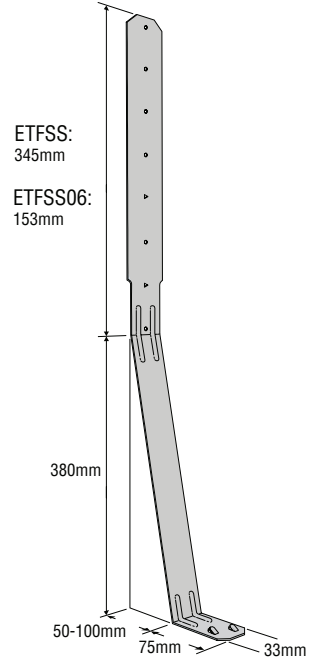
Provides Uplift Restraint to Timber Frame Structures

FEATURES

- CE Marked
- Quick and simple installation
- Tested at Ceram Building Technology in accordance with BS EN 846-4 and evaluated in accordance with EN 845-1
- Each type of ETFSS strap suits cavities from 50mm to 100mm



ETFSS/ETFSS06



This bulletin is effective until August 31st 2011 and reflects information available as at August 1st 2009. This information is updated periodically and should not be relied upon after February 31st 2011; contact Simpson for current information and limited warranty or visit www.strongtie.co.uk.

**Simpson Strong-Tie
United Kingdom Office**
Winchester Road
Cardinal Point
Tamworth
Staffordshire
B78 3HG
FAX: 01827 255616

Meets NHBC and NSAI Technical Requirements

Type No.	Dimensions (mm)			Cavity (mm)	Declared Load (kN)	SWL Short Term Uplift (kN)
	Overall Length	Thickness	Width			
ETFSS	800	1.2	33	50	6.3	3.0
				51-100	3.2	1.5
ETFSS06	610			50	2.7	5.4
				51-100	1.4	2.9

ETFSS Nailing Specification:

Cavities up to 50mm: 6 No. 3.35 x 50mm Stainless Steel Annular Ring Shank Nails (fill all round holes).
Cavities 51mm to 100mm: 8 No. 3.35 x 50mm Stainless Steel Annular Ring Shank Nails (fill all round and triangular holes).

ETFSS06 Nailing Specification:

All cavity widths: 4 No. 3.35 x 50mm Stainless Steel Annular Ring Shank Nails (fill all round holes).

01827 255 600
www.strongtie.co.uk

© 2009
Simpson Strong Tie Inc.

T-UK-ETFSS 08/09
exp. 08/2011