



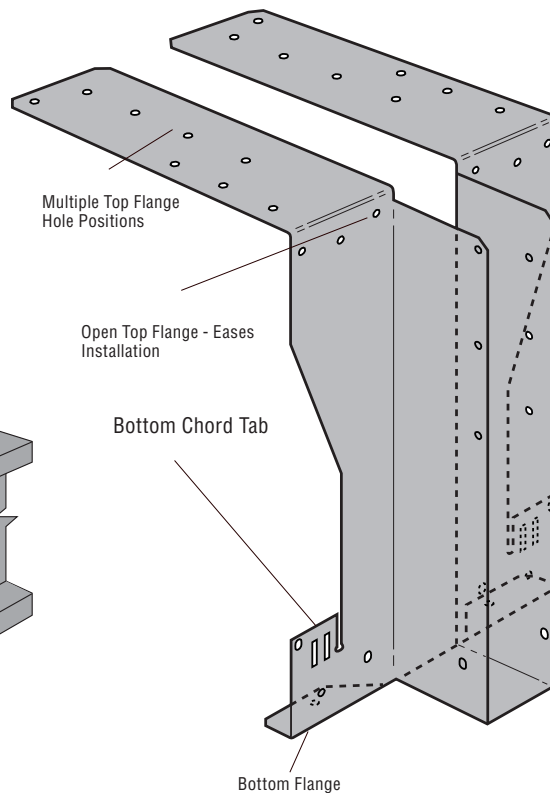
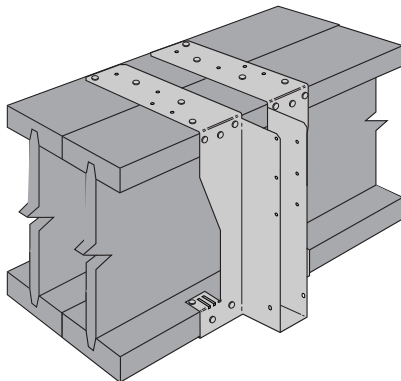
# HITB - Heavy Duty Backer Free Connector

For use with products  
manufactured by:



Based on the innovative ITB hanger, the HITB features a bottom flange and tab, which provide enhanced capacity, plus open top flanges which allow easier installation.

## Typical HITB Installation



## FEATURES

- No requirement for backer blocks when supported from an I-joint header.
- Bottom flanges quickly set the hanger onto the header.
- Bottom chord tabs increase the load distribution between the flanges.
- Open top flange further enhances ease of installation.
- Obround holes in the hanger face permit better nailing access in tight locations.
- Just one nail size required: 3.75mm x 30mm Square Twist.

*This bulletin is effective until January 31st 2009 and reflects information available as at November 1st 2007. This information is updated periodically and should not be relied upon after January 31st 2009; contact Simpson for current information and limited warranty or visit [www.strongtie.co.uk](http://www.strongtie.co.uk).*

**Simpson Strong-Tie  
United Kingdom Office**  
Winchester Road  
Cardinal Point  
Tamworth  
Staffordshire  
B78 3HG  
FAX: 01827 255616

**01827 255 600**  
[www.strongtie.co.uk](http://www.strongtie.co.uk)

© 2007  
Simpson Strong Tie Inc.

**T-UK-HITB-finnForest 11/07**  
exp. 01/2009

# HITB - Heavy Duty Backer Free Connector

## Hanger Performance Values

Model No.	Dimensions		Qty Fasteners		F <sub>k,EN14358</sub> (kN)	S.W.L to BS 5268 (kN)		
	Height (mm)	Width (mm)	Header	Joist		Long Term	Medium Term	Short Term Uplift
2 Ply I-Joist Headers - 38mm Deep LVL Flanges								
HITB-LT(H)/(W)	200	40	22	8	19.2	8.0	9.1	3.6
	300	91						

1. Fasteners: use 3.75mm x 30mm Square Twist Nails.
2. SWL values applicable when HITB hanger is supported from 2 ply I-Joists only.

## Typical HITB Sizes Available For FinnForest Products

Joist Section (mm)		Model Number	Dimension (mm)		
Depth	Width		Height	Width	Bearing
200	38	HITB200/40	200	40	60
	45	HITB200/47	200	47	60
	58	HITB200/61	200	61	60
	2 ply 38	HITB200/78	200	78	60
	89	HITB200/91	200	91	60
220	38	HITB220/40	220	40	60
	45	HITB220/47	220	47	60
	58	HITB220/61	220	61	60
	2 ply 38	HITB220/78	220	78	60
	89	HITB220/91	220	91	60
240	38	HITB240/40	240	40	60
	45	HITB240/47	240	47	60
	58	HITB240/61	240	61	60
	2 ply 38	HITB240/78	240	78	60
	89	HITB240/91	240	91	60
300	38	HITB300/40	300	40	60
	45	HITB300/47	300	47	60
	58	HITB300/61	300	61	60
	2 ply 38	HITB300/78	300	78	60
	89	HITB300/91	300	91	60

**01827 255 600**  
[www.strongtie.co.uk](http://www.strongtie.co.uk)

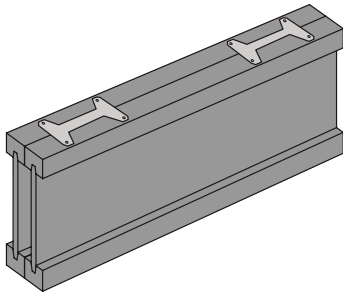
© 2007  
 Simpson Strong Tie Inc.

T-UK-HITB-finnForest 11/07  
 exp. 01/2009

# HITB - Heavy Duty Backer Free Connector

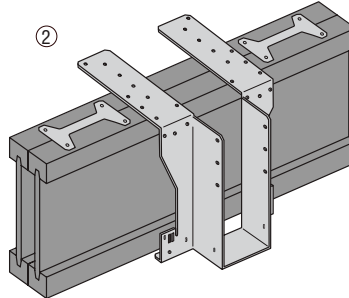
## Installation Instructions

①



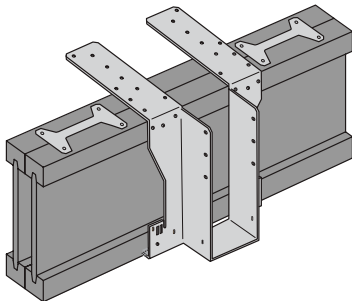
Ensure the supporting I-joists are connected together with the manufacturers recommended connection methods, i.e. MJC Connectors or filler blocks.

②



Position the HITB hanger onto the face of the supporting I-joists, ensuring the bottom flanges are tight up against the underside of the bottom chord.

③

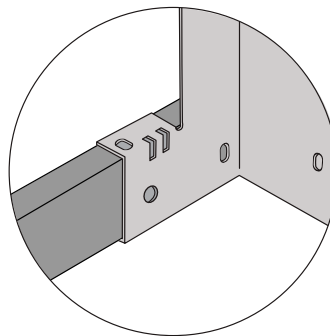


Fill all face round holes with 3.75mm x 30mm square twist nails.

Install 3.75mm x 30 square twist nails into the holes within the bottom flanges.

Flatten the hanger's open top flanges to the top chords of the supporting I-joists and install a minimum of 4 No. square twist nails per flange: 2 into the front joist and 2 into the rear joist.

④

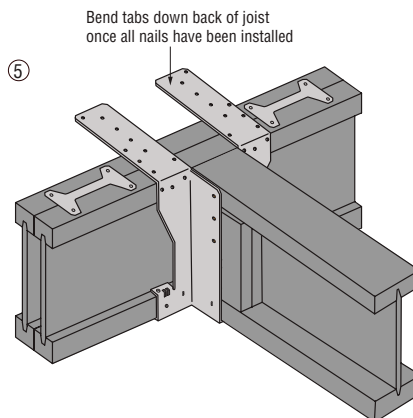


Bend the bottom chord tabs over the top face of the bottom chord and install 3.75mm x 30mm square twist nails through the obround holes into the top face of the bottom chord.

Sit the carried joist into the HITB hanger and install 3.75mm x 30mm square twist nails through the round and obround holes into the joist.

If the carried joist is an I-joist, ensure web stiffeners are installed.

⑤



**01827 255 600**  
[www.strongtie.co.uk](http://www.strongtie.co.uk)

© 2007  
Simpson Strong Tie Inc.

T-UK-HITB-finnForest  
11/07exp. 01/2009