

C2K Crocodile Wall Extension Profiles

THE UK'S MOST POPULAR SOLUTION TO THE TYING-IN OF NEW WALLS TO EXISTING MASONRY WALLS/COLUMNS.

The C2K Crocodile Wall Starter is a quality engineered wall connector system that has been developed for use with most brick and block modules. This system has been designed for multi-purpose use where reliability and durability are important requirements. It provides lateral support to masonry wall panels in conversion, extension and new building work.

- BBA Approved for up to 8m, 3 storey work.
- Accommodates 10mm of vertical movement.
- Adjustable anchor ties to accommodate variation in brick courses.
- All fixings and ties provided within the packs.

CROCODILE NO FLANGE PROFILES:

The multi-purpose no flange profile that has been designed to cater for brick and block walls of widths from 60 to 250mm. Ideal for internal and external applications where both sides of the new wall are to be fair faced.

MATERIAL:

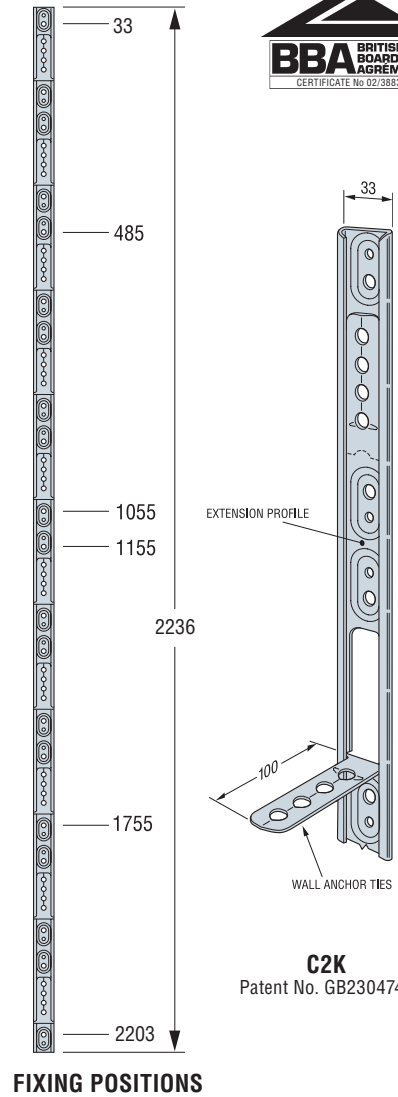
- Stainless Steel Profiles: 0.6mm stainless steel.
- Mild Steel Profiles: 0.6mm pre-galvanised mild steel.
- Coach Screws: M6 x 50mm
- Masonry Plugs: High density polythene.

FINISH:

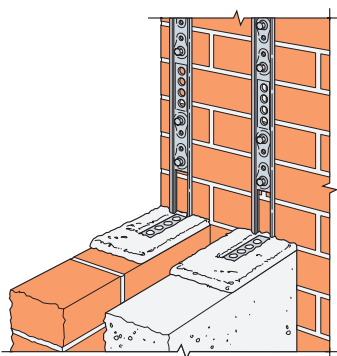
Stainless steel or pre-galvanised mild steel with epoxy coated powder finish.

INSTALLATION:

- Use all specified fasteners.
- Fasteners must be spaced evenly, unless otherwise specified, and installed into the bricks or block and not into mortar joints.
- Insert wall ties provided at maximum 300mm centres, bedding the ties into the mortar joints.
- Detailed site work instructions are provided with each wall connector system.
- In exposed locations it may be necessary to incorporate additional protection, for example the insertion of a vertical dpc.

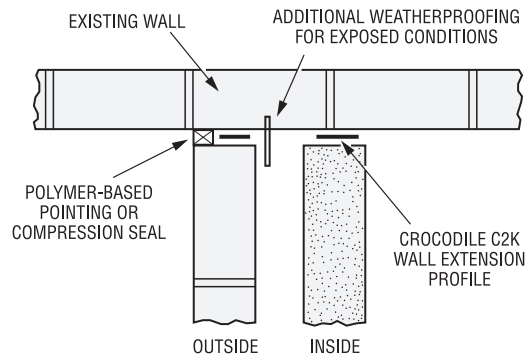


FIXING POSITIONS



Typical C2K Installation

The appropriate fixings and fastenings are included in the C2K packaging.



Model No.		No. of Fixings	Connector Width (mm)	Total Length (mm)	New Wall Thickness (mm)	Shear Strength ¹
Galvanised	Stainless Steel					
C2KG	C2KS	6	33	2236	60 - 250	3.5kN

1. The design shear strength given relates to existing masonry of autoclave aerated concrete blocks with a minimum crushing strength 3.5 N/mm².