

THE A35 ANCHOR'S EXCLUSIVE BENDING SLOT ALLOWS INSTANT, ACCURATE BENDING ON SITE FOR ALL TWO AND THREE-WAY TIES.

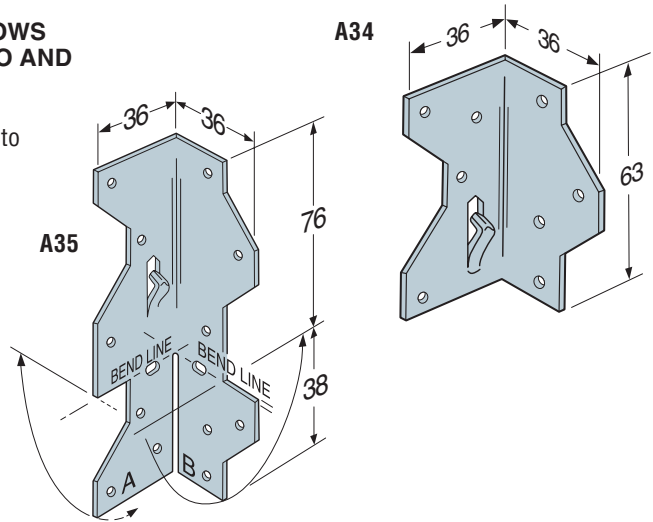
Balanced, completely reversible design allows the A35 to be used to secure a wide variety of connections.

MATERIAL:

1.2mm pre-galvanised mild steel.

INSTALLATION:

Use all the specified fasteners. See "General Notes" (page 12).

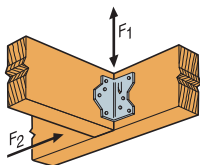


Model No.	Type of Connection	Fasteners (3.75mm x 30mm Square Twist)	Direction of Load	Safe Working Loads (kN)
				Long Term
A34	1	8	F1	1.30
			F2	1.06
A35	2	9	A1	0.98
			C1	0.64
	3	12	A2	0.98
			D	0.57
	4	12	F1	1.30
			F2	1.46

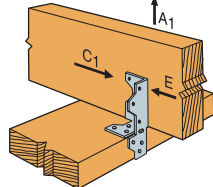
- Working loads are for one anchor. When the anchors are installed on each side of the joist, the minimum joist thickness is 75mm.
- Some illustrations show connections that would cause cross-grain tension or bending of the wood during loading if not reinforced sufficiently. In which case, consider mechanical reinforcement.

TYPE OF CONNECTIONS

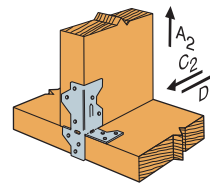
1: A34



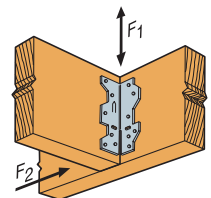
2: A35



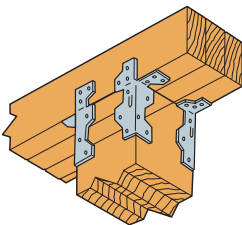
3: A35



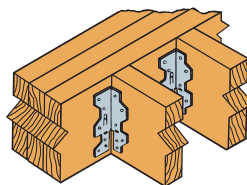
4: A35



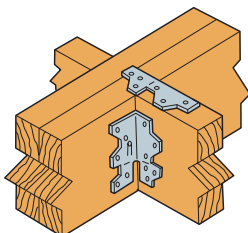
**Beam to Posts
A and B Legs Outside**



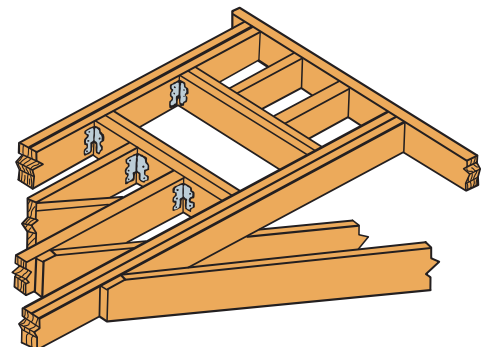
**Ceiling Joists
To Beam**



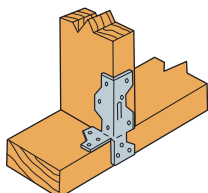
**Joists
To Beam**



Chimney Framing



**Studs to Plate
with B Leg Outside**



**Joists to Plate
with A Leg Inside**

