

JHMIs and HJHMIs are one piece non-welded joist hangers for supporting timber joists, beams and trussed rafters from masonry walls.

- Built-in inspection slot at the base of the hanger to aid inspection from the ground.
- HJHMI: Heavy duty masonry hanger for higher load carrying capacity.
- Top flange provides widest area in contact with masonry support allowing superior performance. Embossments on JHMI stiffen top flange and holes allow improved mortar keying.
- Side flange is much higher than traditional style, providing greatly enhanced resistance to joist rotation.

**MATERIAL:**

JHMI and HJHMI: Pre-galvanised mild steel.

**INSTALLATION:**

- Use all specified fasteners. See "General Notes" (page 12).
- Set hanger back flange tight against block wall when built to desired level, then continue with additional courses to complete wall height. Joist should be tight into back of hanger when possible. Maximum gap permitted is 6mm.
- **MINIMUM 3 COURSES OF SOLID BLOCK (675MM MASONRY) REQUIRED ABOVE HANGER WITH MORTAR FULLY CURED BEFORE APPLYING LOAD.**
- JHMI hangers have two PAN (see MIT hanger) or obround nail holes located so that nails can be driven at an angle into the lower chord of an I-joist. Web stiffeners may be required by the I-joist manufacturer.
- Do not stack blocks or heavy loads on the joists during construction unless the joists have additional support to take the full load of the blocks vertically and horizontally.
- JHMI range of joists hangers can be fixed to steel beams by means of powder actuated fasteners.
- The shot-fired pins must be installed by a qualified person in accordance with the manufacturer's installation requirements.

**OPTIONS**

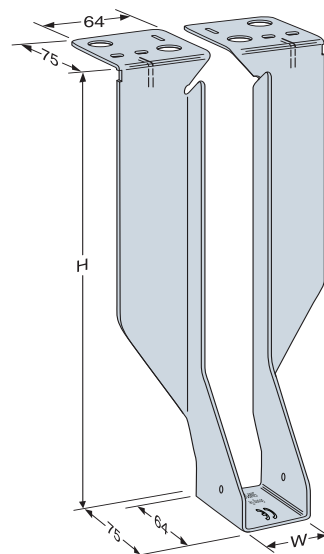
- Return configuration provides additional support by wrapping around three sides of the block. Designate "return" and length of return dimensions when ordering.
- **RETURN HANGERS DO NOT SATISFY THE REQUIREMENTS FOR LATERAL RESTRAINT TYPE HANGERS.**
- Straddle configuration provides two hangers connected across top of support enabling exact alignment on both sides of supporting wall. Designate "straddle" and length of straddle dimensions when ordering.
- JHMI can be shot-fired into steel. See table below.
- Other widths and heights available to order. Contact Simpson Strong-Tie for details.

**JHMI SHOT Fired to a Steel Girder**

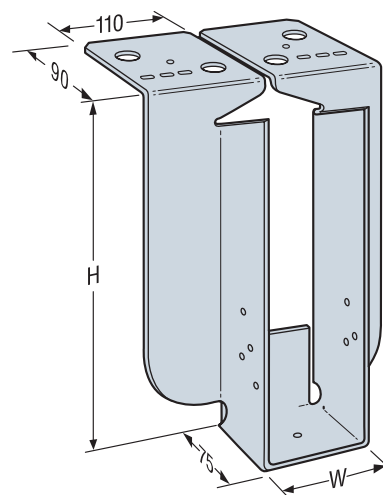
Model No.	Fasteners		Safe Working Load (kN)
	Steel Support	Joist Nails (mm)	
JHMI	4 No Shot Fired Pins	2 - 3.75 x 30	5.17

1. The above Safe Working Loads are based upon product tests using four No. Hilti 12mm X-EDNI steel pins fired through holes provided in the top flange of the hangers onto 4mm thick steel plate. Other pins may be used provided similar structural performance is verified by the pin manufacturer. Pin Head size must be sufficient to prevent pull through during loading.
2. The designer must ensure that the steel support member will support the imposed loads.
3. Install shot-fired pins in accordance with manufacturers instructions.

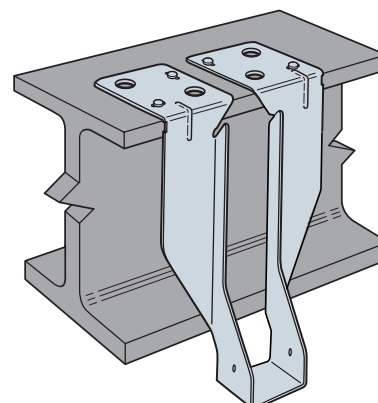
**JHMI**



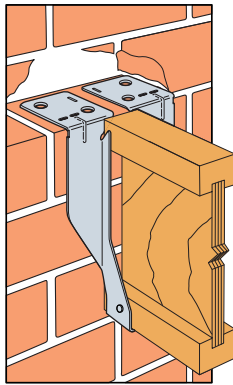
**HJHMI**



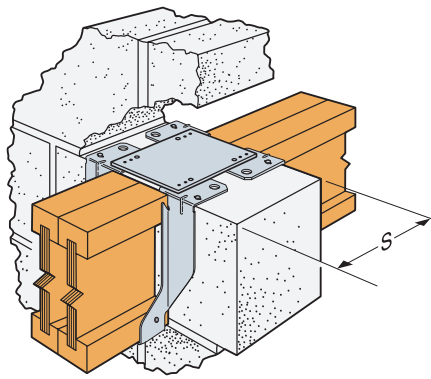
**JHMI Shot-fired to steel**



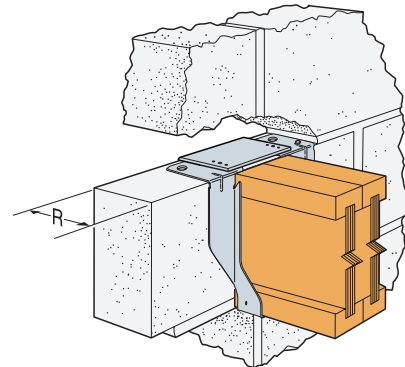
**TYPICAL JHMI Installation**



**JHMIS Straddle Configuration**



**JHMIR Return Configuration**



**JHMI HANGERS FOR ENGINEERED WOOD SIZES - LOADS**

Model	Joist Fasteners		Safe Working Loads (kN)			Characteristic Capacity (kN)		
			Block Strength			Block Strength		
	Qty	Nail	2.8N/mm <sup>2</sup> Solid AAC	3.5N/mm <sup>2</sup> Solid LAC	7N/mm <sup>2</sup> Solid DAC	2.8N/mm <sup>2</sup> Solid AAC	3.5N/mm <sup>2</sup> Solid LAC	7N/mm <sup>2</sup> Solid DAC
JHMI	2	3.75x30	6.25	6.25	9.37	10.10	10.10	13.98

1. Loads are based upon tests conducted by CERAM Building Technology and are determined in accordance with BS 6178 and EN 845.
2. Loads apply to masonry blocks with a minimum compressive strength as indicated.
3. The block thickness must be at least the same size as the top flange depth (as shown in relevant illustrations).
4. For straddle hangers the minimum S dimension is 100mm.
5. 3.75 x 30 refers to a square twist nail (not supplied with hanger).

**HJHMI HANGERS FOR ENGINEERED WOOD SIZES - LOADS**

Size Range (mm)		Joist Fasteners		Safe Working Loads (kN)			Characteristic Capacity (kN)		
Width	Height			Block Strength			Block Strength		
Width	Height	Qty	Nail	2.8N/mm <sup>2</sup> Solid AAC	3.5N/mm <sup>2</sup> Solid LAC	7N/mm <sup>2</sup> Solid DAC	2.8N/mm <sup>2</sup> Solid AAC	3.5N/mm <sup>2</sup> Solid LAC	7N/mm <sup>2</sup> Solid DAC
40 - 74	140 - 400	2	3.75 x 30	8.45	8.45	13.50	12.67	12.67	20.25
75 - 200	140 - 400	2	3.75 x 30	10.62	10.60	13.50	15.90	15.90	20.25
91 - 200	140 - 400	8	4.00 x 90	10.60	10.60	15.52	15.90	15.90	23.28
201 - 300	140 - 400	2	3.75 x 30	8.50	8.50	10.80	12.75	12.75	16.35

1. Test conducted by CERAM Building Technology in accordance with EN846-4 and evaluated in accordance with EN845-1.
2. 3.75 x 30 refers to square twist nails.
3. Loads apply to solid block with minimum compressive strengths indicated. The block thickness must be at least the same size as the top flange length, as shown in the illustrations above. For straddle hangers the minimum S dimension is 100mm to achieve published loads, except for HJHM hangers which must be twice the top flange length of a single hanger.
4. Shading Indicates installation requires web stiffeners when used to support I-joists.

**SKEWED JHMI HANGERS - LOADS**

Model	Joist Fasteners		Safe Working Loads (kN)		
			Block Strength		
	Qty	Nail	2.8N/mm <sup>2</sup> Solid AAC	3.5N/mm <sup>2</sup> Solid LAC	7N/mm <sup>2</sup> Solid DAC
JHMI	4	3.75x30	5.05	5.17	5.17

1. Maximum width: 61mm
2. Maximum skew 45°

Continued On Next Page.



**JHMI HANGERS FOR ENGINEERED WOOD**

Joist Size		Model No.	Hanger Dimension (mm)		
Width	Height		Width (W)	Height (H)	
38	114	JHMI114/40	40	114	
	140	JHMI140/40	40	140	
	184	JHMI184/40	40	184	
	195	JHMI195/40	40	195	
	220	JHMI225/40	40	225	
	240	JHMI240/40	40	240	
	300	JHMI300/40	40	300	
	350	JHMI350/40	40	350	
45	145	JHMI145/47	47	145	
	184	JHMI184/47	47	184	
	195	JHMI195/47	47	195	
	200	JHMI200/47	47	200	
	220	JHMI225/47	47	225	
	240	JHMI240/47	47	240	
	300	JHMI300/47	47	300	
	350	JHMI350/47	47	350	
47	145	JHMI145/50	50	145	
	195	JHMI195/50	50	195	
	225	JHMI225/50	50	225	
	235	JHMI235/50	50	235	
	240	JHMI240/50	50	240	
	245	JHMI245/50	50	245	
	300	JHMI300/50	50	300	
	350	JHMI350/50	50	350	
51	240	JHMI240/53	53	240	
	300	JHMI300/53	53	300	
	350	JHMI350/53	53	350	
	400	JHMI400/53	53	400	
	58 or 60	195	JHMI195/61	61	195
		200	JHMI200/61	61	200
		220	JHMI225/61	61	225
		235	JHMI235/61	61	235
240		JHMI240/61	61	240	
245		JHMI245/61	61	245	
300		JHMI300/61	61	300	
350		JHMI350/61	61	350	
63	195	JHMI195/66	66	194	
	220-225	JHMI225/66	66	225	
	235	JHMI235/66	66	235	
	240	JHMI240/66	66	240	
	245	JHMI245/66	66	245	
	300	JHMI300/66	66	300	
	350	JHMI350/66	66	350	
	400	JHMI400/66	66	400	
68	220	JHMI225/70	70	225	
	240	JHMI240/70	70	240	
	245	JHMI245/70	70	245	
	300	JHMI300/70	70	300	
	350	JHMI350/70	70	350	
70	400	JHMI400/70	70	400	
	220	JHMI225/72	72	225	
	240	JHMI240/72	72	240	
	300	JHMI300/72	72	300	
	350	JHMI350/72	72	350	
72	400	JHMI400/72	72	400	
	195	JHMI195/75	75	195	
	220	JHMI225/75	75	225	
	235	JHMI235/75	75	235	
	245	JHMI245/75	75	245	
2ply 38	300	JHMI300/75	75	300	
	350	JHMI350/75	75	350	
	400	JHMI400/75	75	400	
	114	JHMI114/78	78	114	
	140	JHMI140/78	78	140	
	184	JHMI184/78	78	184	
	220	JHMI225/78	78	225	
	235	JHMI235/78	78	235	
2ply 45 or 89	240	JHMI240/78	78	240	
	300	JHMI300/78	78	300	
	350	JHMI350/78	78	350	
	184	JHMI184/91	91	184	
	195	JHMI195/91	91	195	
	200	JHMI200/91	91	200	
	220	JHMI225/91	91	225	
	235	JHMI235/91	91	235	
2ply 47	240	JHMI240/91	91	240	
	245	JHMI245/91	91	245	
	300	JHMI300/91	91	300	
	350	JHMI350/91	91	350	
	400	JHMI400/91	91	400	
	195	JHMI195/96	96	195	
	225	JHMI225/96	96	225	
	235	JHMI235/96	96	235	
2ply 70	240	JHMI240/96	96	240	
	245	JHMI245/96	96	245	
	300	JHMI300/96	96	300	
	350	JHMI350/96	96	350	
	400	JHMI400/96	96	400	
	195	JHMI195/100	100	195	
	220	JHMI225/100	100	225	
	245	JHMI245/100	100	245	
97	300	JHMI300/100	100	300	
	350	JHMI350/100	100	350	
	400	JHMI400/100	100	400	
	195	JHMI195/100	100	195	
	220	JHMI225/100	100	225	

**HJHMI HANGERS FOR ENGINEERED WOOD**

Joist Size		Model No.	Hanger Dimension (mm)	
Width	Height		Width (W)	Height (H)
45	225	HJHMI225/47	47	225
	240	HJHMI240/47	47	240
	300	HJHMI300/47	47	300
	350	HJHMI350/47	47	350
	400	HJHMI400/47	47	400
	225	HJHMI225/50	50	225
	235	HJHMI235/50	50	235
	240	HJHMI240/50	50	240
47	245	HJHMI245/50	50	245
	300	HJHMI300/50	50	300
	350	HJHMI350/50	50	350
	400	HJHMI400/50	50	400
	195	HJHMI195/66	66	195
	225	HJHMI225/66	66	225
	235	HJHMI235/66	66	235
	245	HJHMI245/66	66	245
63	300	HJHMI300/66	66	300
	350	HJHMI350/66	66	350
	400	HJHMI400/66	66	400
	225	HJHMI225/72	72	225
	240	HJHMI240/72	72	240
	300	HJHMI300/72	72	300
	350	HJHMI350/72	72	350
	400	HJHMI400/72	72	400
70	195	HJHMI195/75	75	195
	225	HJHMI225/75	75	225
	235	HJHMI235/75	75	235
	245	HJHMI245/75	75	245
	300	HJHMI300/75	75	300
	195	HJHMI195/78	78	195
	220	HJHMI225/78	78	225
	235	HJHMI235/78	78	235
2ply 38	240	HJHMI240/78	78	240
	245	HJHMI245/78	78	245
	300	HJHMI300/78	78	300
	400	HJHMI400/78	78	400
	145	HJHMI145/91	91	145
	184	HJHMI184/91	91	184
	195	HJHMI195/91	91	195
	200	HJHMI200/91	91	200
2ply 45 or 89	220	HJHMI225/91	91	225
	235	HJHMI235/91	91	235
	240	HJHMI240/91	91	240
	245	HJHMI245/91	91	245
	300	HJHMI300/91	91	300
	350	HJHMI350/91	91	350
	400	HJHMI400/91	91	400
	195	HJHMI195/96	96	195
2ply 47	220	HJHMI225/96	96	225
	235	HJHMI235/96	96	235
	240	HJHMI240/96	96	240
	245	HJHMI245/96	96	245
	300	HJHMI300/96	96	300
	350	HJHMI350/96	96	350
	400	HJHMI400/96	96	400
	220	HJHMI225/100	100	225
97	245	HJHMI240/100	100	240
	300	HJHMI300/100	100	300
	350	HJHMI350/100	100	350
	400	HJHMI400/100	100	400
	450	HJHMI450/100	100	450
	240	HJHMI240/105	105	240
	300	HJHMI300/105	105	300
	350	HJHMI350/105	105	350
2ply 51	400	HJHMI400/105	105	400
	195	HJHMI195/120	120	195
	200	HJHMI200/120	120	200
	220	HJHMI225/120	120	225
	235	HJHMI235/120	120	235
	240	HJHMI240/120	120	240
	245	HJHMI245/120	120	245
	300	HJHMI300/120	120	300
2ply 60	350	HJHMI350/120	120	350
	400	HJHMI400/120	120	400
	195	HJHMI195/129	129	195
	220-225	HJHMI225/129	129	225
	240	HJHMI240/129	129	240
	300	HJHMI300/129	129	300
	400	HJHMI400/129	129	400
	225	HJHMI225/142	142	225
2ply 70	240	HJHMI240/142	142	240
	300	HJHMI300/142	142	300
	350	HJHMI350/142	142	350
	400	HJHMI400/142	142	400
	195	HJHMI195/146	146	195
	220	HJHMI225/146	146	225
	235	HJHMI235/146	146	235
	245	HJHMI245/146	146	245
2ply 72	300	HJHMI300/146	146	300
	350	HJHMI350/146	146	350
	400	HJHMI400/146	146	400

Joist Size		Model No.	Hanger Dimension (mm)	
Width	Height		Width (W)	Height (H)
4ply 45 or 2ply 90 or 1ply 178	184	HJHMI184/180	180	184
	195	HJHMI195/180	180	195
	220	HJHMI225/180	180	225
	220	HJHMI225/180	180	225
	235	HJHMI235/180	180	235
	240	HJHMI240/180	180	240
	300	HJHMI300/180	180	300
	350	HJHMI350/180	180	350
2ply 90	400	HJHMI400/180	180	400
	220	HJHMI225/184	184	225
	240	HJHMI240/184	184	240
	300	HJHMI300/184	184	300
	350	HJHMI350/184	184	350
	400	HJHMI400/184	184	400
	195	HJHMI195/196	196	195
	220	HJHMI225/196	196	225
2ply 97	235	HJHMI235/196	196	235
	245	HJHMI245/196	196	245
	300	HJHMI300/196	196	300
	350	HJHMI350/196	196	350
	400	HJHMI400/196	196	400
	450	HJHMI450/196	196	450
	225	HJHMI225/212	212	225
	240	HJHMI240/212	212	240
3ply 70	300	HJHMI300/212	212	300
	350	HJHMI350/212	212	350
	400	HJHMI400/212	212	400